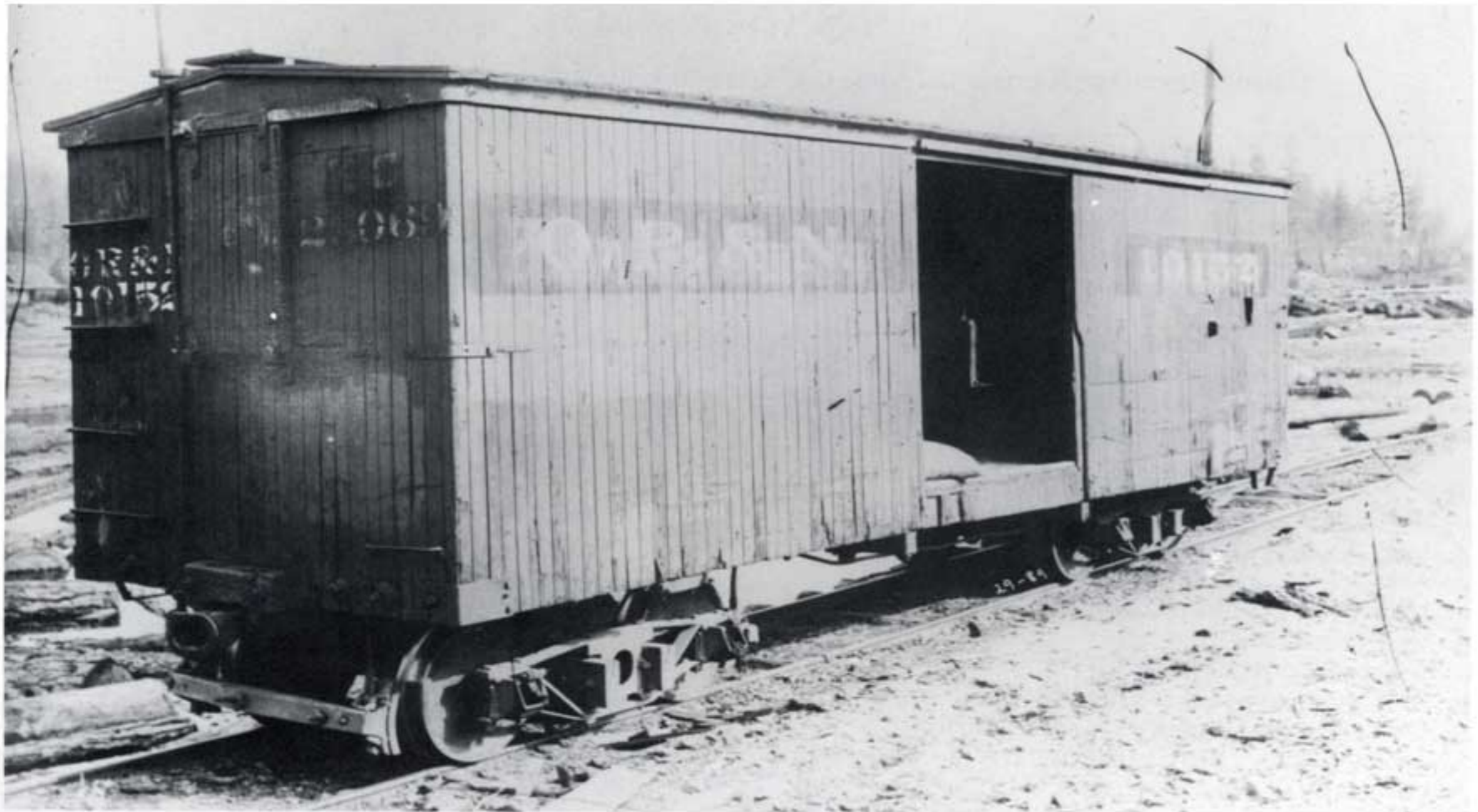


24' BOXCAR RESTORATION



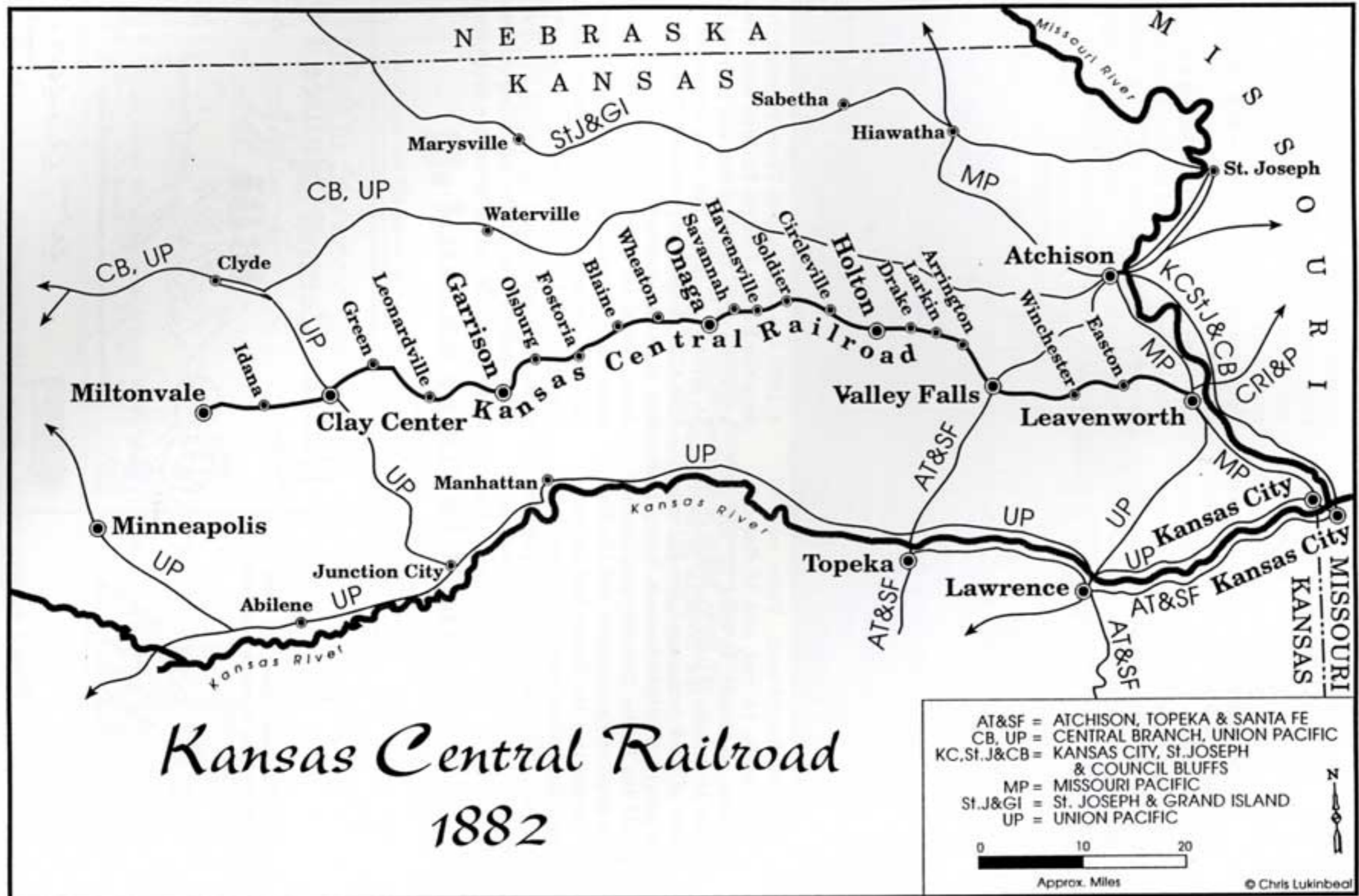
AGENDA

- Kansas Central Railroad (short history)
- Boxcar history
- Restoration to date
- What's next

Kansas Central Railroad

- Incorporated June 1871
- Opened in 1872 to Holton, then to Onaga (total of 82 miles)
- Eventually ran to Miltonvale 165 miles from Leavenworth
- Converted to standard gauge in 1890
- Sold to Kansas and Western Railway Company in 1897
- Sold again to Union Pacific in 1908
- Line closed in 1935

Kansas Central Railroad



Kansas Central Railroad (cont)

- For more detail information see:

Title: A history of the Kansas Central Railway, 1871-1935

[Volume 2, Issue 4 of Emporia State research studies](#)

Author [Harold Crimmins](#)

Publisher Graduate Division of the Kansas State Teachers College, 1954 Original from the University of Michigan Digitized May 14, 2009

Length 34 pages

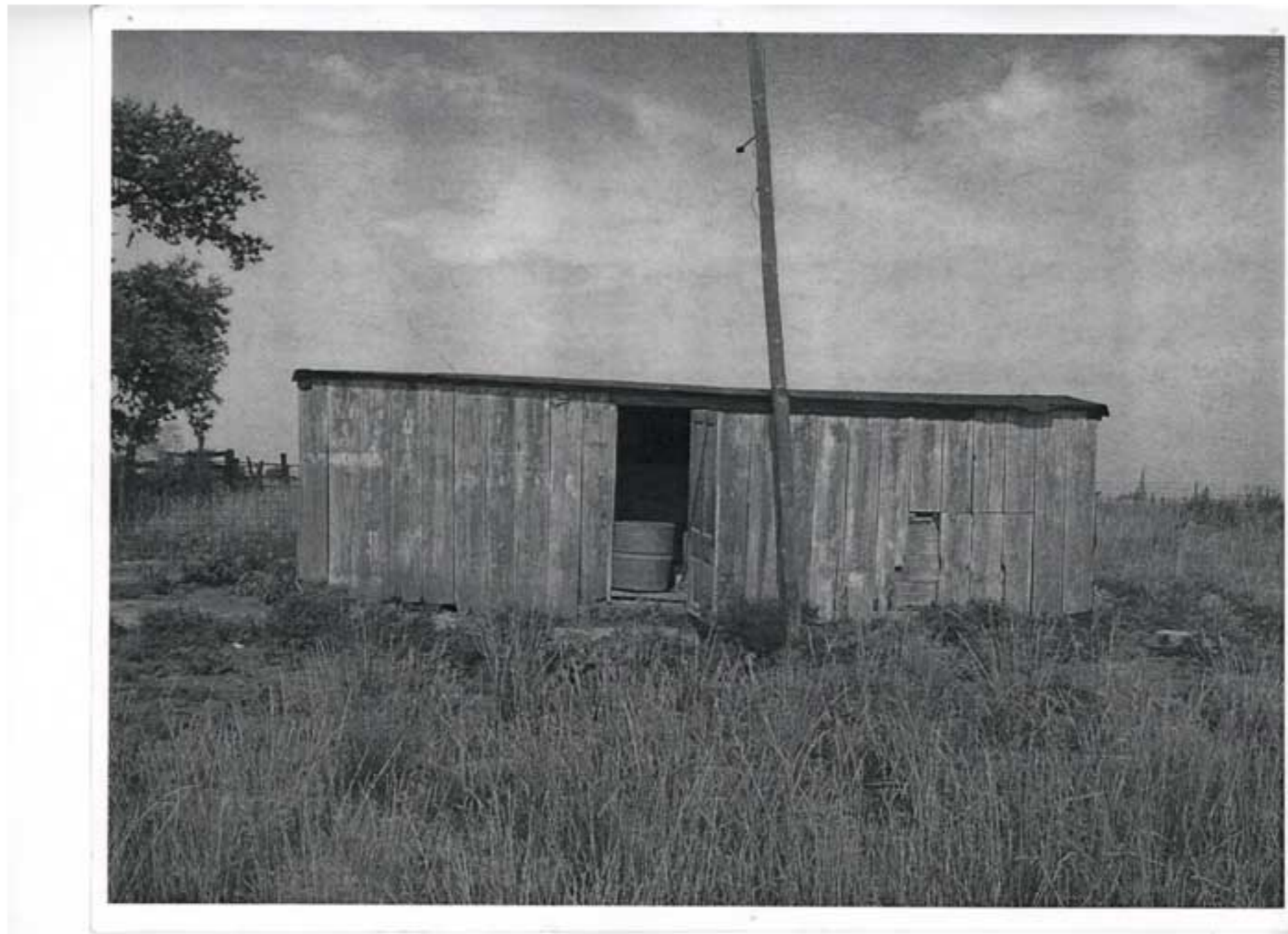
Kansas Central Railroad (cont)

- Title: Kansas Central Narrow Gauge
Author I.E. Quastler
Publisher: South Platte Press. 1999
Length 104 pages

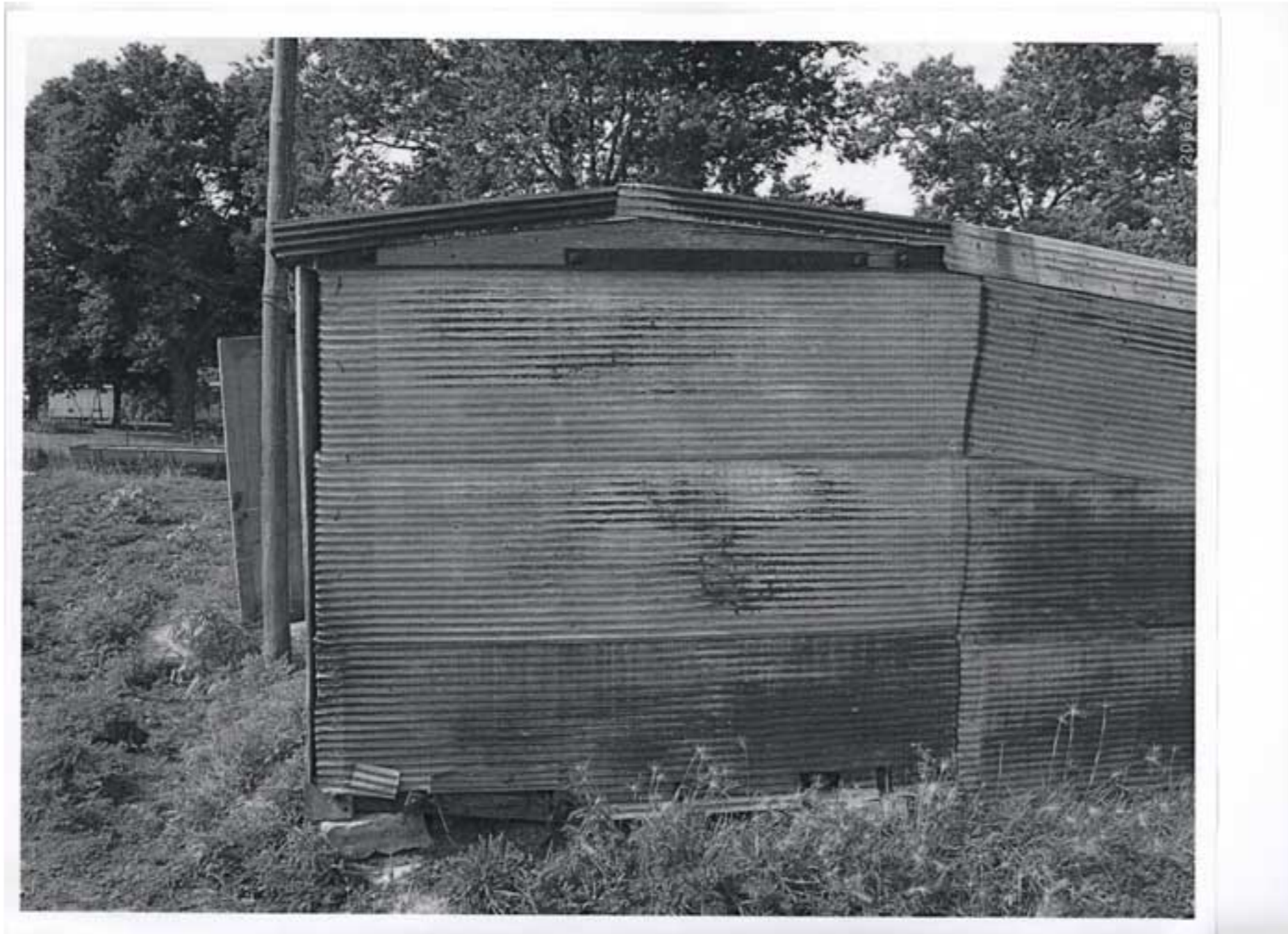
Boxcar History

- The boxcar was located on a farm near Winchester in 2006
- Had been there since mid 1930's
- Used for storage of cattle feed
- Was disassembled and pieces numbered and marked

Boxcar History (cont)



Boxcar History (cont)



Boxcar History (cont)



Boxcar History (cont)



Restoration

Oct 07



Restoration (cont)

Mar 09



Restoration (cont)

Mar 09



Restoration (cont)

May 09



Restoration (cont)

Aug 09



Restoration (cont)

Oct 09



Restoration (cont)

Oct 09



Restoration (cont)

Apr 10



Restoration (cont)

Apr 27



Restoration (cont)

Apr 27



What's next

- Floor beam replacement est cost: \$300
- Flooring deck est cost: \$230
- Sliding doors and windows est cost: \$200
- Wheels and trucks est cost: \$3000
- Double roof (material on hand)